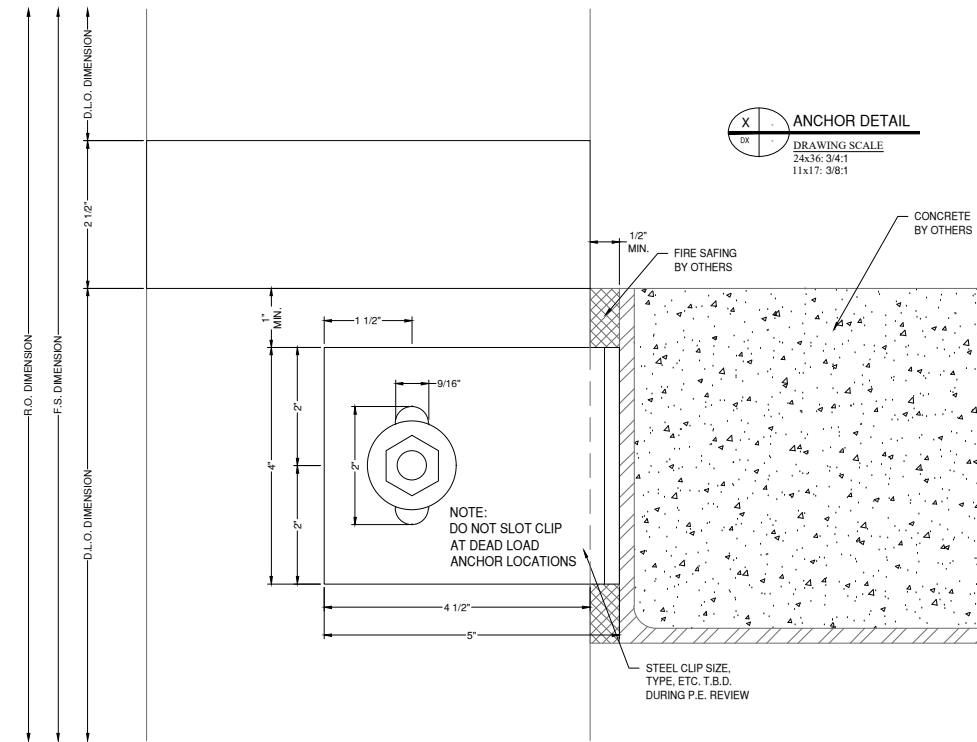


FIRE SAFING - WHAT IT DOES AND HOW TO NOT USE IT

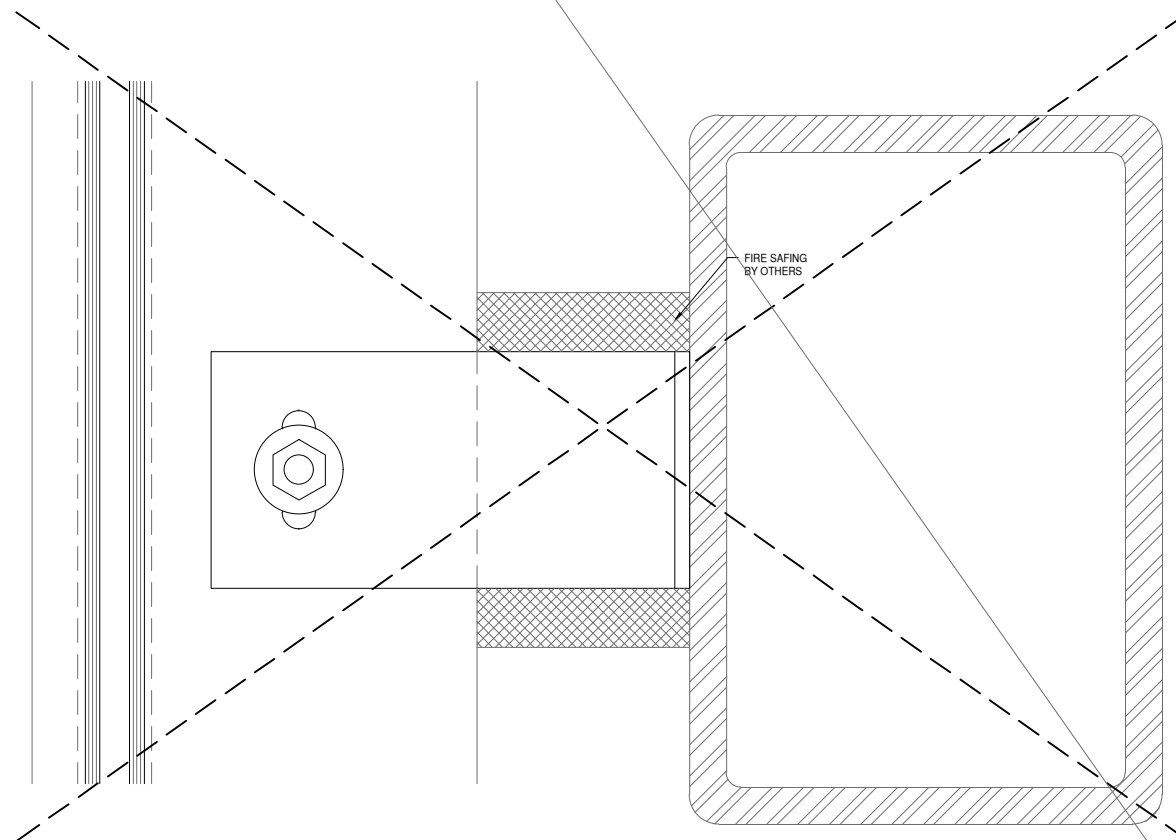
FIRE SAFING IS A PASSIVE FIRE PROTECTION METHOD USED IN BUILDING CONSTRUCTION TO PREVENT THE SPREAD OF FIRE, SMOKE, AND TOXIC GASES THROUGH GAPS AND JOINT BETWEEN DIFFERENT BUILDING ELEMENTS. FOR OUR PURPOSES, THE GAP BETWEEN THE BACK OF OUR SYSTEM AND THE FLOOR SLAB.

SEEN TO THE RIGHT IS THE DEFAULT ANCHOR DETAIL THAT SHOWS FIRE SAFING. THIS DETAIL IS JUST A STARTING POINT HOWEVER AND SHOULD NOT BE USED WITHOUT THINKING THROUGH WHAT EACH COMPONENT AND NOTE MEANS, INCLUDING THE ADDITION OF A BACKPAN.

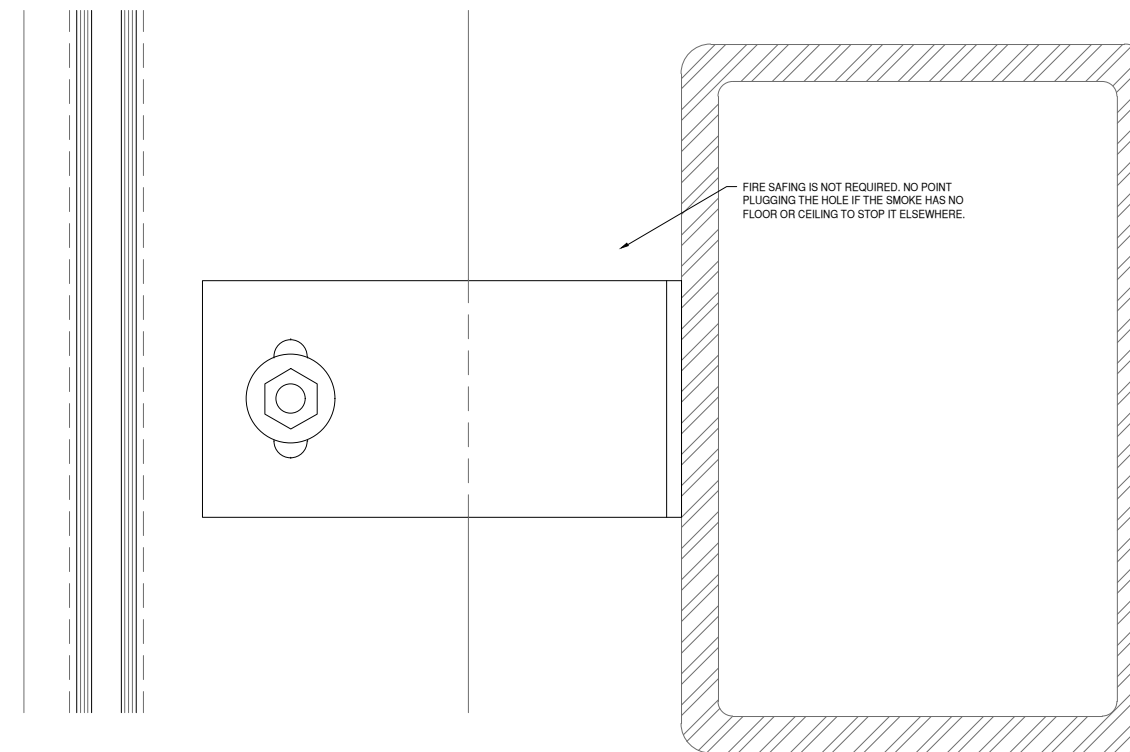
BELOW ON THE LEFT IS AN ANCHOR CONNECTING WITH A STEEL TUBE. THESE DETAILS ARE VERY TYPICAL FOR AN ANCHOR CONDITION THAT DOES NOT OCCUR AT A FLOOR SLAB. DUE TO THIS NO FIRE SAFING IS REQUIRED AS SEEN TO THE BOTTOM RIGHT. THERE IS NO REASON TO PLUG THE HOLE BETWEEN THE SYSTEM AND STEEL IF THE SMOKE CAN JUST RISE TO THE RIGHT OF THE STEEL.



DEFAULT ANCHOR DETAIL - NEEDS MODIFICATION BASED ON CONDITION



INCORRECT DETAIL OF ANCHOR NOT AT FLOORLINE



CORRECT DETAIL OF ANCHOR NOT AT FLOORLINE

FIRE SAFING
WHAT IT DOES AND HOW TO NOT USE IT

FIRE SAFING - HOW TO USE IT CORRECTLY

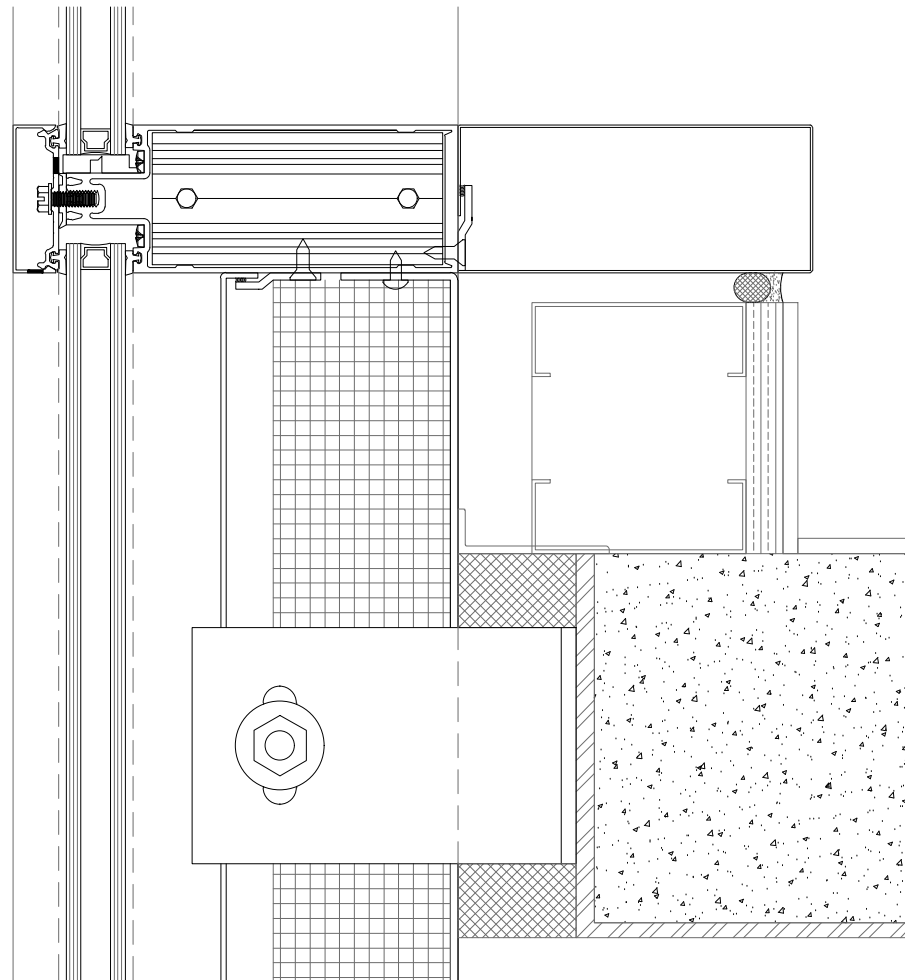
THERE ARE A COUPLE OF WAYS THAT FIRE SAFING CAN BE SHOWN IN A DETAIL DEPENDING ON THE CONDITION OF THE SYSTEM.

BELOW IS A CONDITION WHERE THE SYSTEM HAS SPANDREL GLASS AND MORE IMPORTANTLY A BACKPAN. THIS BACKPAN GIVES A CONTINUOUS SURFACE FOR THE FIRE SAFING TO SEAL AGAINST.

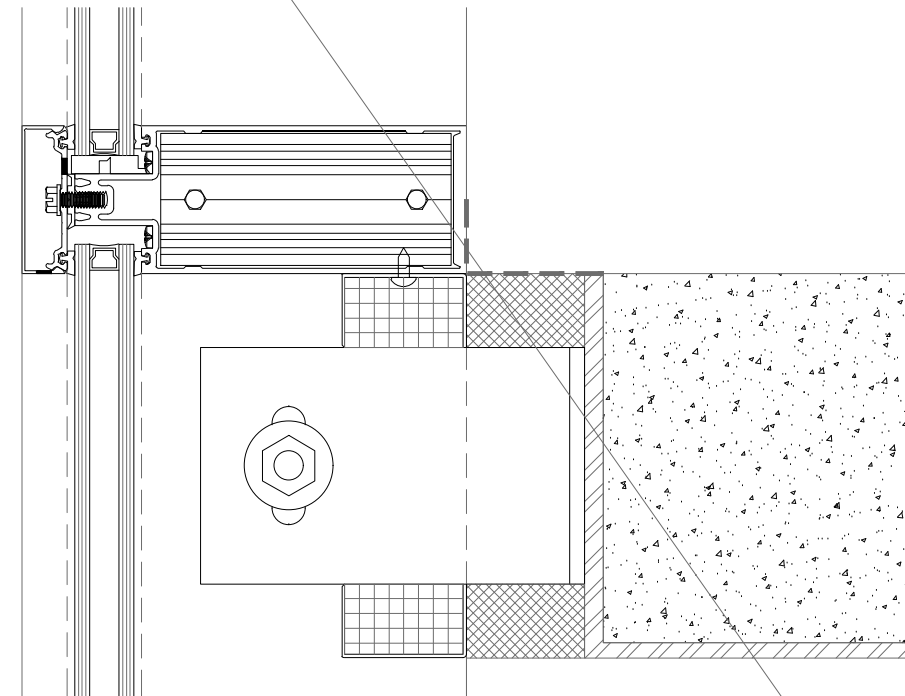
TO THE RIGHT THERE IS A CONDITION WHERE THERE IS NO BACKPAN , BUT THERE IS A PARTIAL PAN AND SPRAY SEAL AT THE HORIZONTAL THAT ALLOWS THE SEAL TO THE FIRE SAFING.

AT THE BOTTOM RIGHT THERE IS NO BACKPAN OR HORIZONTAL TO SEAL AGAINST, SO THE PARTIAL PAN WILL HAVE TO SEAL TO THE GLASS INSTEAD. TYPICALLY WE WOULD SHOW THE FIRE SAFING STOPPING AT 1" FROM THE GLASS.

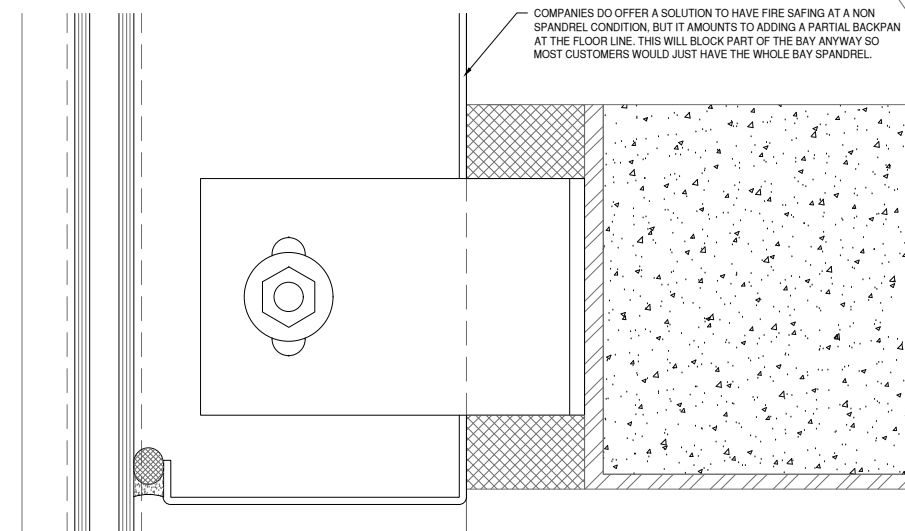
IT IS IMPORTANT TO NOTE THAT WE SHOW THE FIRE SAFING BROKEN UP BY THE ANCHOR, BUT THIS IS JUST FOR VISUAL CLARITY. WHEN INSTALLED THE FIRE SAFING WOULD ALSO BE INSTALLED BETWEEN THE ANCHORS.



CORRECT USE AT FLOOR SLAB - AT SPANDREL/BACKPAN



CORRECT USE AT FLOOR SLAB - CLOSED AT HORIZ



CORRECT USE AT FLOOR SLAB - NO HORIZ OR SPANDREL/BACKPAN

FIRE SAFING
HOW TO USE IT CORRECTLY

MT #:

MT-36

SHEET:

2 OF 2