

VAPOR BARRIER INTERACTION WITH GLAZING SYSTEM

VAPOR BARRIERS ARE ONE ASPECT OF THE WATER CONTROL FOR BUILDINGS THAT COMMONLY INTERACT WITH OUR SYSTEM. THIS INTERACTION IS TYPICALLY WITH THE PRIMARY SEAL, AS THIS IS THE SEAL THAT KEEPS WATER OUT OF THE INTERIOR PORTION OF THE SYSTEM, AND IN TURN THE BUILDING.

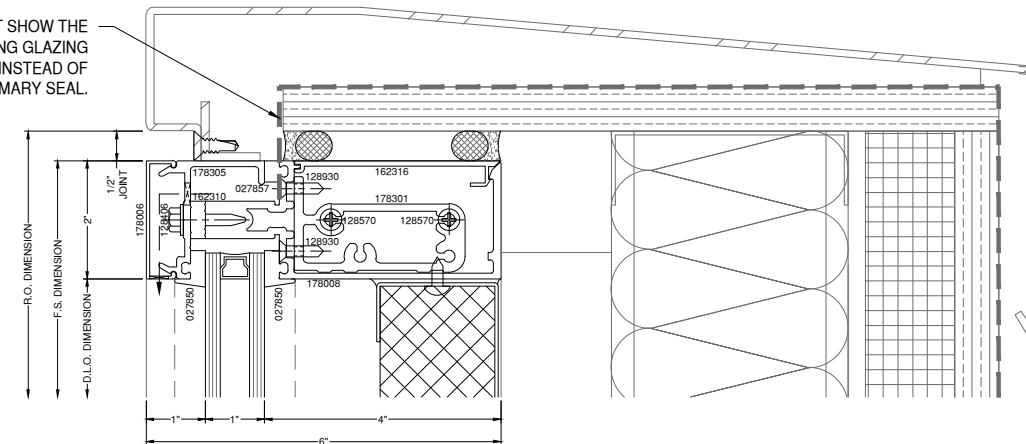
AS SEEN IN THE DETAIL TO THE RIGHT SOME ARCHITECTS WILL GLAZE IN THE MEMBRANE AT THE GASKET AT THE SHOULDER OF THE MULLION. THIS TIES THE BUILDING WATER CONTROL TO THE WATER CONTROL OF THE SYSTEM.

WE DO NOT SUGGEST DOING THIS AND OUR STANDARD MEMBRANE TIE IN IS SEEN BELOW TO THE RIGHT WHERE THE MEMBRANE GOES UNDERNEATH THE PRIMARY SEAL. **THIS IS WHAT WE WILL DRAW UNLESS DIRECTLY STATED BY THE CUSTOMER.**

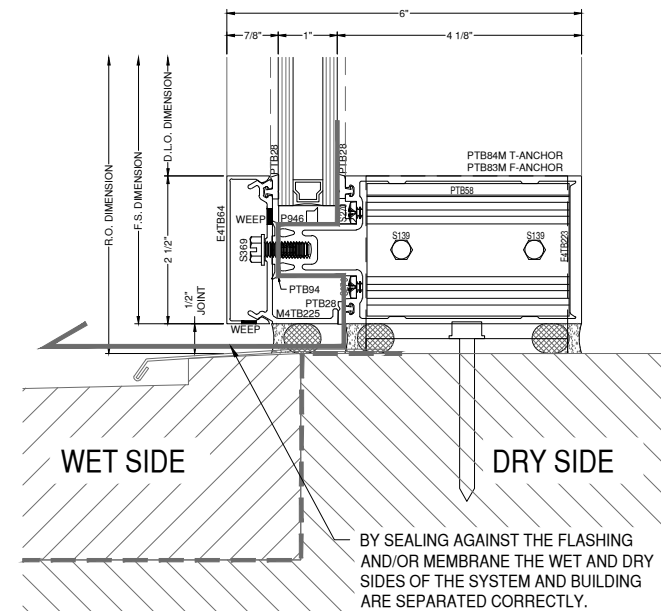
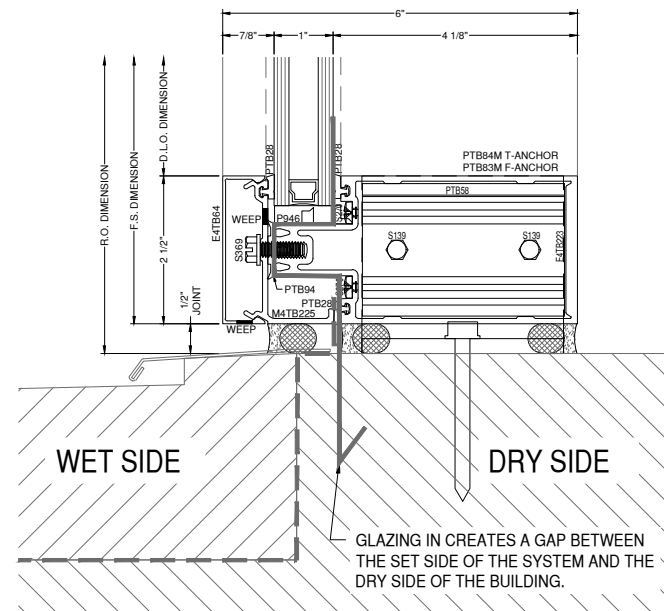
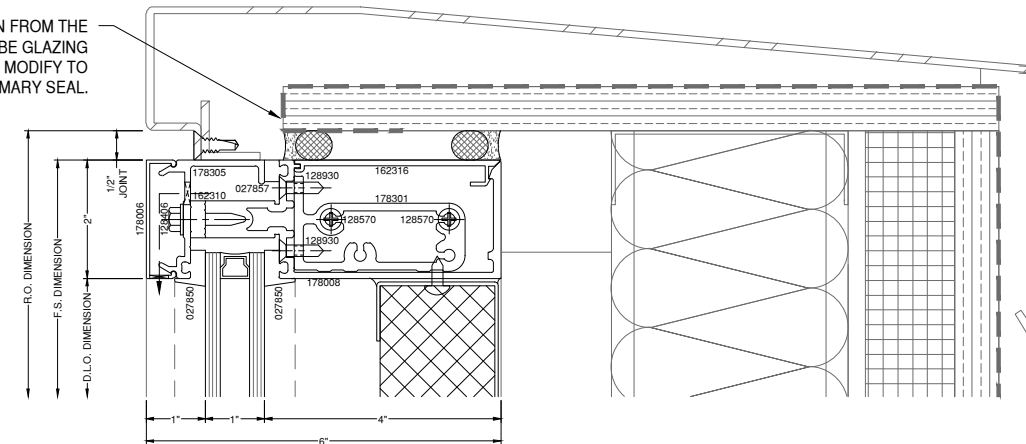
THE REASONS FOR THIS ARE:

- THE MEMBRANE MIGHT TEAR DUE TO THE MOVEMENT OF THE BUILDING THAT THE JOINT COMPENSATES FOR.
- THE PRIMARY SEALANT SEPARATES THE WET SIDE AND DRY SIDE OF THE BUILDING. THE BUILDING MEMBRANE DOES THE SAME THING, AND BY GLAZING THE BUILDING MEMBRANE INTO THE SYSTEM THERE IS A GAP CREATED BETWEEN THE WET AND DRY SIDE. THIS CAN BE SEEN BELOW.
- THE INSTALL FOR THIS IS MORE INVOLVED, AS SEEN ON THE NEXT PAGE.

ARCHITECTURAL MIGHT SHOW THE MEMBRANE OR FLASHING GLAZING INTO THE SYSTEM INSTEAD OF INTERACTING WITH THE PRIMARY SEAL.



UNLESS GIVEN DIRECTION FROM THE CUSTOMER WE WILL NOT BE GLAZING THEM IN AND INSTEAD MODIFY TO INTERACT WITH THE PRIMARY SEAL.



VAPOR BARRIER INTERACTION WITH GLAZING SYSTEM

MT #:

MT-17

SHEET:

1 OF 2

VAPOR BARRIER INTERACTION WITH GLAZING SYSTEM

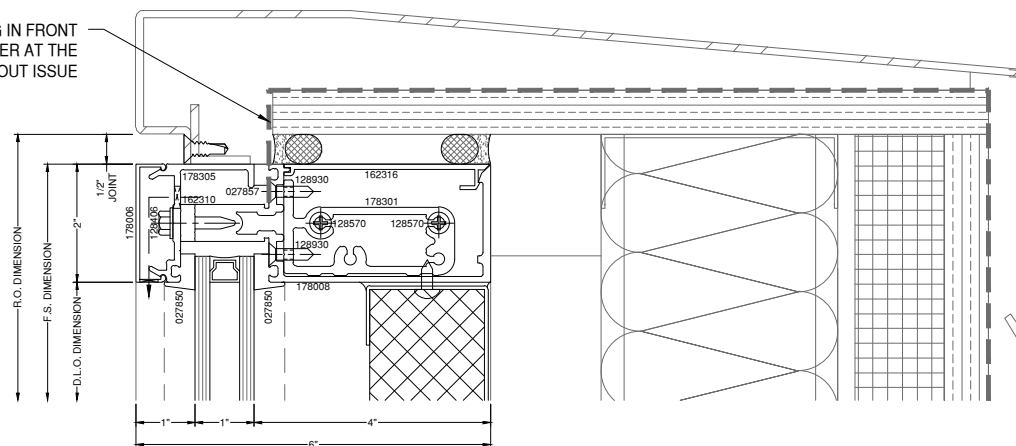
LOOKING AT THE VERTICAL AND HEAD CONNECTION IN 3D ALLOWS US TO SEE A PROBLEM WITH GLAZING IN THE MEMBRANE. THERE IS NO ISSUE AT THE HEAD MULLION WE SEE IN THE 2D SECTION VIEW, BUT IN THE ISO TO THE RIGHT WE CAN SEE THAT THE MEMBRANE WILL BE BROKEN BY THE VERTICAL TONGUE.

THERE ARE TWO SOLUTIONS TO THIS, MODIFY THE MEMBRANE OR MODIFY THE TONGUE. BOTH OPTIONS ARE MORE LABOR DUE TO HAVING TO SEAL THE AREA TO MAKE UP FOR THIS LIMITATION.

KEEP IN MIND:

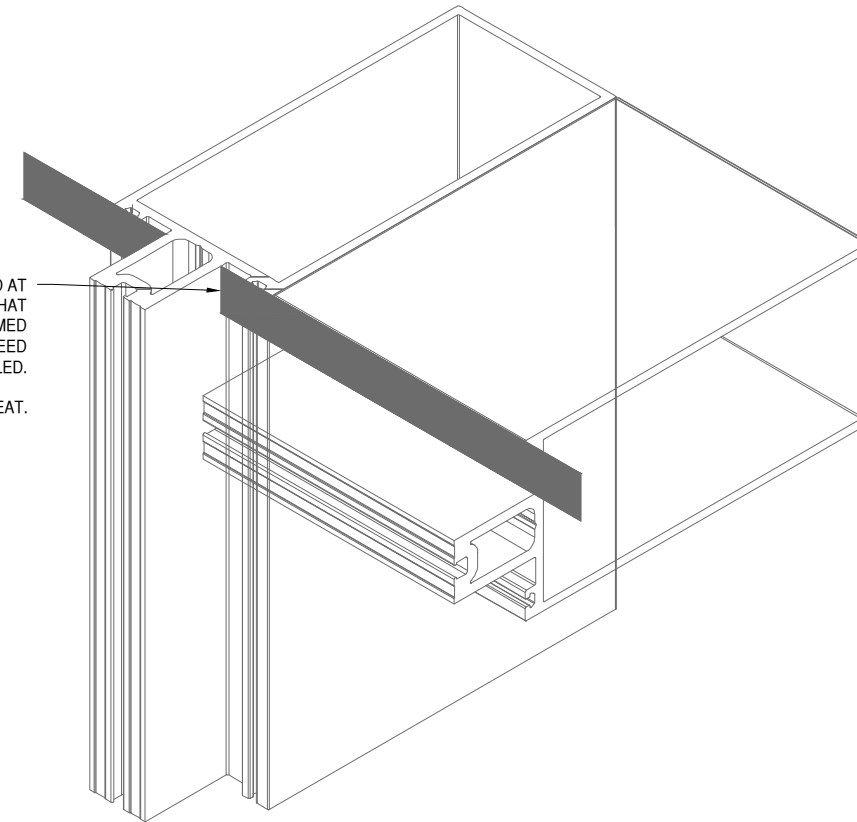
SOME SYSTEMS HAVE ALTERNATE PRESSURE PLATES AND GASKETS FOR ALLOWING MEMBRANES OR BREAK METAL TO GLAZE INTO THE SYSTEM. LOOK AT THE DETAILS ONLINE TO SEE IF THAT IS THE CASE.

THE MEMBRANE IS PASSING IN FRONT OF THE SHOULDER AT THE HORIZONTAL MEMBER WITHOUT ISSUE



THAT MEMBRANE HOWEVER IS STOPPED AT THE VERTICAL TONGUES. THIS MEANS THAT THE MEMBRANE WILL NEED TO BE TRIMMED AND SEALED, OR THE TONGUE WILL NEED TO BE REMOVED AT THE TOP AND SEALED.

BOTH OPTIONS ARE NOT GREAT.



VAPOR BARRIER INTERACTION
WITH GLAZING SYSTEM

MT #:

MT-17

SHEET:

2 OF 2