

# TD BANK

## FRANKLIN SQUARE, NY

# SHOP DRAWING PACKAGE

**GLAZING  
CONTRACTOR**

999 STREET, ST  
CITY, STATE 99999  
PH: 999.999.9999

### GLAZING SCHEDULE

IG-1	1/4" CLEAR TEMPERED GLASS 1/2" AIRSPACE (MILL SPACER) 1/4" CLEAR TEMPERED GLASS
GL-1	1/4" CLEAR TEMPERED GLASS

### SYSTEM NOTES

**SYSTEMS TYPES**

SYSTEM #1: YEEK YES 45TU STOREFRONT SYSTEM (2" X 4 1/2")  
 SYSTEM #2: YKK YES FS STOREFRONT SYSTEM (1 3/4" X 4 1/2")  
 ENTRANCES: MEDIUM STILE ENTRANCES

**METAL FINISHES**

DARK BRONZE ANODIZED

**SEALANT TYPES**

TBD

**STRUCTURE BY OTHERS**

THE BUILDING STRUCTURE AND COMPONENTS THEREOF MUST BE CAPABLE OF SAFELY CARRYING THE LOADS IMPOSED UPON IT BY THE SYSTEMS DETAILED, INCLUDING BUT NOT LIMITED TO DEAD LOADS OF THE SYSTEMS, WIND LOADINGS, THERMAL LOADINGS, SEISMIC LOADINGS, SNOW LOADINGS AND LIVE LOADINGS.

**NOTES:**

THESE SHOP DRAWINGS HAVE BEEN PREPARED BASED ON ARCHITECTURAL DRAWINGS:

### SYMBOLS

<p> - GLAZING IDENTIFICATION</p> <p> - DETAIL IDENTIFICATION /PAGE NUMBER</p> <p> - COLUMN LINE</p> <p> - SECTION</p> <p> - VIEW</p> <p> - SCHEDULED HARDWARE</p>	<p> - WORK POINT</p> <p> - ELEVATION BENCHMARK</p> <p> - DEAD LOAD ANCHOR</p> <p> - WIND LOAD ANCHOR</p> <p> - REVISION NUMBER CALL-OUT</p> <p> - STEEL CALL-OUT</p>
<p>R.O. - ROUGH OPENING                  D.O. - DOOR OPENING                  D.L.O. - DAY LIGHT OPENING                  S.F.O. - STOREFRONT OPENING                  C.W.O. - CURTAINWALL OPENING                  G.S. - GLASS SIZE                  F.S. - FRAME SIZE                  W.P. - WORK POINT                  CL - CENTER LINE</p>	<p>N.T.S. - NOT TO SCALE                  F.F. - FINISH FLOOR                  V.I.F. - VERIFY IN FIELD                  DL - DEADLOAD                  WL - WINDLOAD                  E.O.G - EDGE OF GLASS                  T/O - TOP OF                  B/O - BOTTOM OF                  REF. - REFERENCE</p>

### DRAWING NOTES

1. MP DRAFTING & DESIGN AND THE CUSTOMER WILL ASSUME NO RESPONSIBILITY FOR ERRORS RESULTING FROM THE USE OF THESE DRAWINGS BY OTHER TRADES.
  2. FINAL APPROVAL BY THE GENERAL CONTRACTOR CONSTITUTES ACCEPTANCE OF ALL DEVIATIONS TO THE CONTRACT DOCUMENTS MADE BY MP DRAFTING & DESIGN AND THE CUSTOMER IN THESE DRAWINGS.
  3. THESE DRAWINGS REPRESENT MP DRAFTING'S AND THE CUSTOMER'S INTERPRETATION OF THE APPLICATION OF PRODUCTS TO THIS PROJECT IN FUNCTIONAL COMPLIANCE WITH THE ARCHITECT'S DRAWINGS AND SPECIFICATION. IT IS IMPORTANT THAT THIS INTERPRETATION BE REVIEWED DIMENSIONALLY AND FUNCTIONALLY WITH RESPECT TO ACTUAL ARCHITECT'S INTENT, INTERFACING CONDITIONS, MATERIAL AND JOB SITE CONDITIONS.
  4. ALL DIMENSIONS SHALL BE FIELD VERIFIED AND/OR APPROVED BY THE GENERAL CONTRACTOR PRIOR TO GLASS ORDERING AND FABRICATION. MP DRAFTING & DESIGN AND THE CUSTOMER WILL ASSUME NO RESPONSIBILITY FOR DIMENSIONAL ERRORS OR CHANGES RESULTING FROM FIELD CORRECTIONS.
  5. PROJECT MATERIALS MUST BE PROTECTED IMMEDIATELY FROM STAINING BY WET CARDBOARD PAPER AND FROM THE ACTION OF HARSH ALKALIS AND SAND IN CONCRETE, STUCCO, MORTAR OR PLASTER. THE SETTING OF THE PROJECT MATERIALS REQUIRES THE GENERAL CONTRACTOR TO CLOSELY SUPERVISE OTHER TRADES SO AS TO PREVENT MARRING OR DISCOLORATION FROM ANY CAUSE.
  6. ALL SEALANT JOINTS SHOULD BE SEALED WATERTIGHT FOLLOWING THE SEALANT MANUFACTURER'S RECOMMENDATIONS AS TO SIZE, METHOD OF APPLICATION AND COMPATIBILITY WITH ADJOINING MATERIALS.
  7. ALL FRAMING SYSTEMS SHALL BE FABRICATED & INSTALLED PER THE MANUFACTURERS INSTRUCTIONS.
  8. THE ROUGH OPENINGS PROVIDED MUST BE SQUARE AND WITHIN SPECIFIED BUILDING TOLERANCES.
  9. PERIMETER SUBSTRATE MUST BE CAPABLE OF WITHSTANDING REACTION FORCES IMPOSED BY DESIGN LOADS.
  10. ALL FASTENING INFORMATION TO BE VERIFIED ON SITE BY CUSTOMER FOR VARIATION FROM SHOP DRAWINGS. ALL FASTENERS SHOWN FOR REFERENCE ONLY UNLESS SPECIFICALLY CALLED OUT BY PROFESSIONAL ENGINEER.
  11. LAWS AND BUILDING AND SAFETY CODES GOVERNING THE DESIGN AND USE OF GLAZING ENTRANCE, WINDOW AND CURTAIN WALL PRODUCTS VARY WIDELY. MP DRAFTING & DESIGN AND THE CUSTOMER DOES NOT CONTROL THESE SELECTION OF PRODUCT CONFIGURATIONS, OPERATING HARDWARE OR GLAZING MATERIALS AND ASSUMES NO RESPONSIBILITY.
  12. SEE CUSTOMER'S QUOTATION FOR ANY EXCLUDED ITEMS NOT NOTED WITHIN.
- PROPRIETARY NOTICE:**  
 THIS DRAWING SHEET AND CONTENTS HEREIN ARE PROPERTY OF MP DRAFTING & DESIGN AND ITS CUSTOMERS. USE OF THESE DRAWINGS, ITS CONTENT AND DESIGN CONCEPTS ARE INTENDED FOR THE USE OF THE INTENDED RECIPIENT. MP DRAFTING & DESIGN AND ITS CUSTOMERS ARE NOT RESPONSIBLE FOR USE BY OTHER PARTIES.

### ENGINEERING

P.E. STRUCTURAL REVIEW INCLUDED: YES  NO

TYPICAL ENGINEERING NOTE:

ENGINEERING REVIEW (IF REQUIRED) WILL BE PROVIDED AFTER 1ST SUBMITTAL APPROVAL OF THESE SHOP DRAWINGS. ALL APPLICABLE INFORMATION BELOW, SYSTEM REVIEW, REINFORCEMENT, FASTENERS, LOADS, ETC. WILL BE PROVIDED AT THAT TIME.

ARCHITECT NOTE: PLEASE VERIFY ALL INFORMATION BELOW

### SHEET INDEX

C1	COVER SHEET
E1	ELEVATIONS
D1 THRU D3	DETAILS

### NOTE SYMBOL KEY

ARCHITECT NOTE	ENGINEERING NOTE ENGINEER OF RECORD OR DELEGATED DESIGN
GLAZING CONTRACTOR OR PROJECT MANAGER NOTE	FABRICATOR OR INSTALLER NOTE

DESIGN LOADS: (PER ----)

BASIC WINDSPEED: -

IMPORTANCE FACTOR: -

EXPOSURE CATEGORY: -

BUILDING HEIGHT: -

TYPICAL WINDLOAD: -

CORNER WINDLOAD: -

SNOW LOADS: -

ALLOWABLE DEFLECTION: - L/175 (SPAN < 13'-6"), L/240+1/4" (SPAN >= 13'-6")

### DIMENSION VERIFICATION

FIELD VERIFIED:

GUARANTEED DIMENSIONS:

### REVISIONS

REV	DESCRIPTION	DATE	BY
0	1ST SUBMITTAL	05.14.2024	SIS

**MP drafting & design**

www.MPDRAFTING.com  
 P: 248.522.7096  
 F: 248.522.7030

### STAMPS/ SUBMITTALS:

REVISION	DATE
0	05.14.2024
-	-
-	-
-	-
-	-

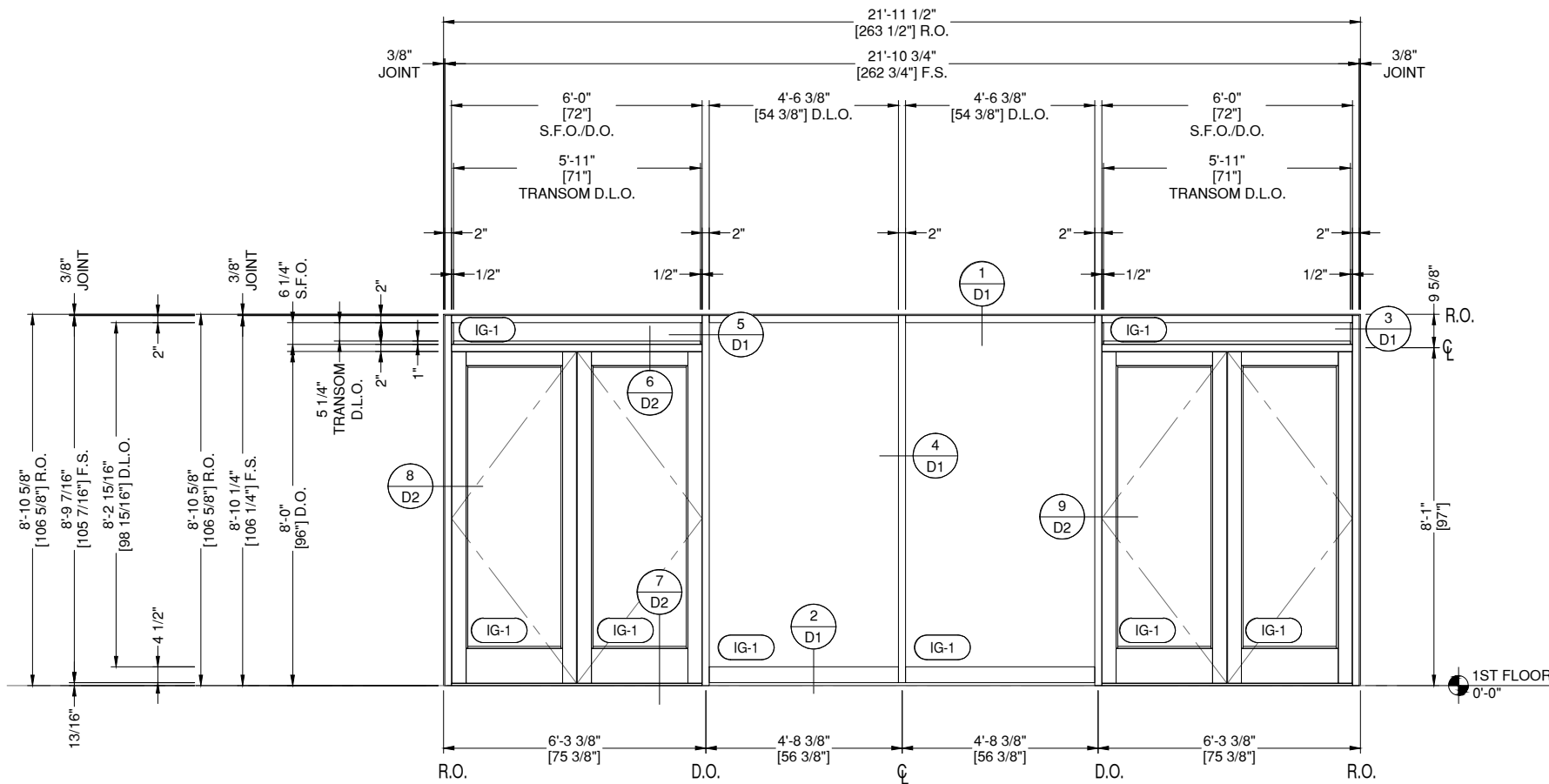
PROJECT NUMBER: **24-194**

PROJECT NAME: **TD BANK**

SHEET DESCRIPTION: **COVER SHEET**

SHEET: **C1**

NOTE:  
ALL DIMENSIONS TO BE FIELD  
VERIFIED PRIOR TO FABRICATION

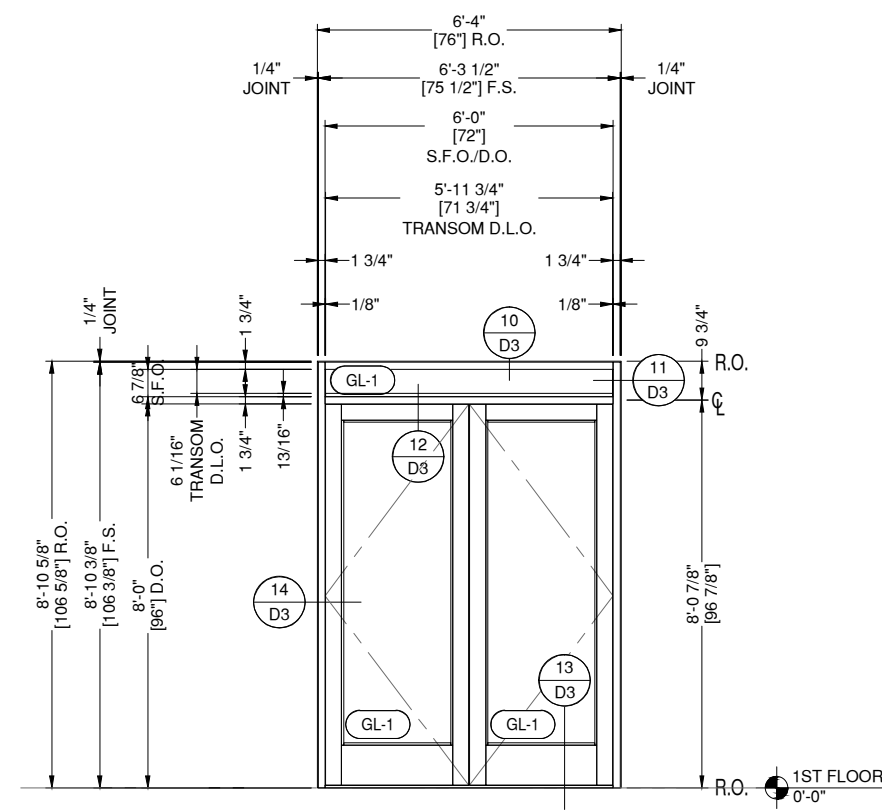


**1 ELEVATION 1**  
**E1**

**DRAWING SCALE**  
24x36: 1/2" = 1'-0"  
11x17: 1/4" = 1'-0"

THUS REQ'D:	1
OPP REQ'D:	0
TOTAL REQ'D:	1

YKK YES 45TU SERIES SF  
FINISH: DARK BRONZE ANODIZED  
MEDIUM STILE ENTRANCE



**2 ELEVATION 2**  
**E1**

**DRAWING SCALE**  
24x36: 1/2" = 1'-0"  
11x17: 1/4" = 1'-0"

THUS REQ'D:	2
OPP REQ'D:	0
TOTAL REQ'D:	2

YKK YES 45FS SERIES SF  
FINISH: DARK BRONZE ANODIZED  
MEDIUM STILE ENTRANCE

**HARDWARE SCHEDULE**

**ATM EXTERIOR ENTRANCE:**  
2 SELECT HEAVY DUTY FULL MORTISE HINGE  
1 SURFACE MOUNTED LCN CLOSER (LEFT HAND DOOR)  
2 DOOR SWEEPS AND 1 DUAL MAGNETIC LOCK. RIGHT HAND DOOR WILL BE FURNISHED WITH A TORMAX 1301 SURFACE MOUNTED AUTOMATIC DOOR CLOSER.  
2 SURFACE MOUNTED PUSH BUTTON ACTUATOR FOR ACTIVATION OF THE AUTOMATIC OPERATOR.  
EXTERIOR- MOUNT 1 ACTUATOR NEAR THE CARD READER AND ON THE INTERIOR MOUNT THE ACTUATOR NEAR THE EXISTING PTO BUTTON

**BRANCH EXTERIOR ENTRANCE :**  
2 SURFACE MOUNTED CLOSERS WITH DROP DOWN PLATES  
2 SELECT HEAVY DUTY FULL MORTISE HINGE  
2 DOOR SWEEPS  
2 PANIC DEVICES W/ CONCEALED VERTICAL RODS AND CYLINDER DOGGING  
1 EXTERIOR ESCUTCHEON  
THE 3 CYLINDERS FOR THIS AREA WILL BE PINNED IN THE FIELD DURING THE INSTALLATION SO EXISTING KEYS WOULD FUNCTION UPON COMPLETION.

**HARDWARE SCHEDULE**

**ATM INTERIOR ENTRANCE:**  
2 SELECT HEAVY DUTY FULL MORTISE HINGE  
1 SURFACE MOUNTED LCN CLOSERS (LEFT HAND DOOR)  
2 DOOR SWEEPS AND 1 DUAL MAGNETIC LOCK.  
THE RIGHT HAND DOOR FURNISHED WITH TORMAX 1301 SURFACE MOUNTED AUTOMATIC DOOR CLOSER.  
2 SURFACE MOUNTED PUSH BUTTON ACTUATOR FOR ACTIVATION OF THE AUTOMATIC OPERATOR.  
ON THE EXTERIOR- MOUNT 1 ACTUATOR NEAR THE PTO BUTTON AND ON THE INTERIOR MOUNT THE ACTUATOR ON THE FRAME OF THE DOOR.

**BRANCH EXTERIOR ENTRANCE :**  
2 SURFACE MOUNTED CLOSERS WITH DROP DOWN PLATES  
2 SELECT HEAVY DUTY FULL MORTISE HINGE  
2 DOOR SWEEPS  
2 CYLINDERS  
1 DEADBOLT  
2 CONCEALED FLUSH BOLTS  
THE 2 CYLINDERS FOR THIS DOOR WILL NEED TO BE PINNED IN THE FIELD DURING INSTALLATION SO EXISTING KEYS WOULD FUNCTION UPON COMPLETION

**GLAZING CONTRACTOR**

999 STREET, ST  
CITY, STATE 99999  
PH: 999.999.9999



www.MPDRAFTING.com  
P: 248.522.7096  
F: 248.522.7030

**STAMPS/ SUBMITTALS:**

REVISION	DATE
0	05.14.2024
-	-
-	-
-	-
-	-

PROJECT NUMBER:  
**24-194**

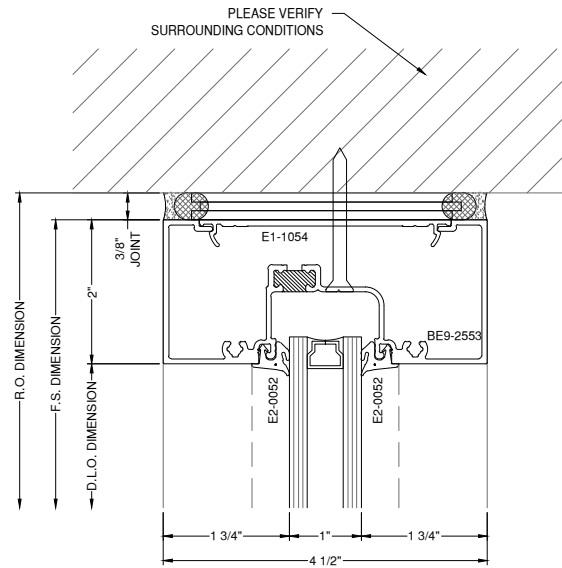
PROJECT NAME:  
**TD BANK**

SHEET DESCRIPTION:  
**ELEVATIONS**

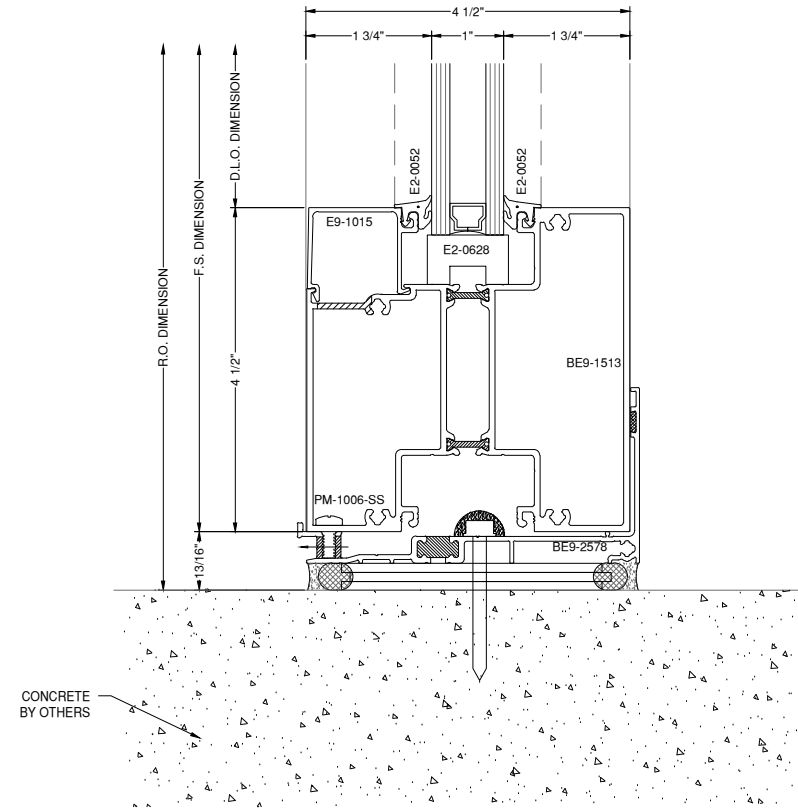
SHEET:  
**E1**

NOTE:  
FASTENERS SHOWN FOR LOCATION  
REFERENCE ONLY. FASTENER TYPE, SIZE  
AND SPACING ARE TO BE DETERMINED  
BY THE PROFESSIONAL ENGINEER.

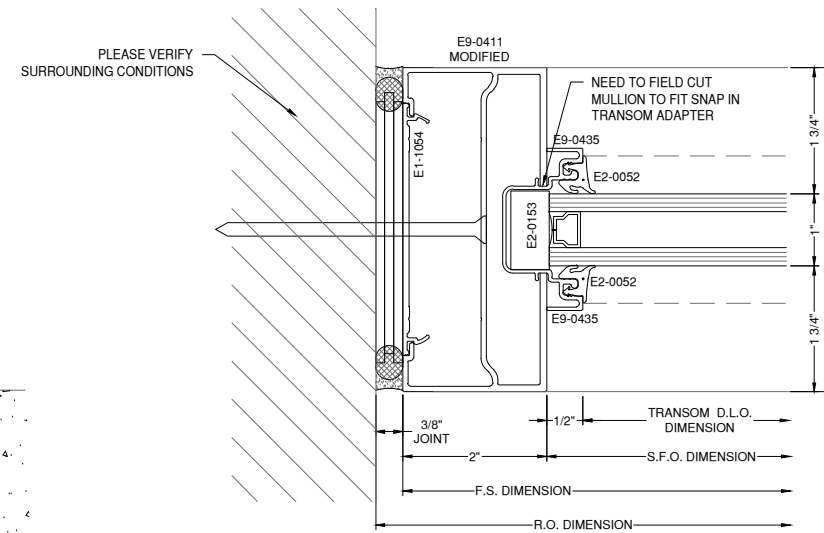
NOTE:  
ALL DIMENSIONS TO BE FIELD  
VERIFIED PRIOR TO FABRICATION



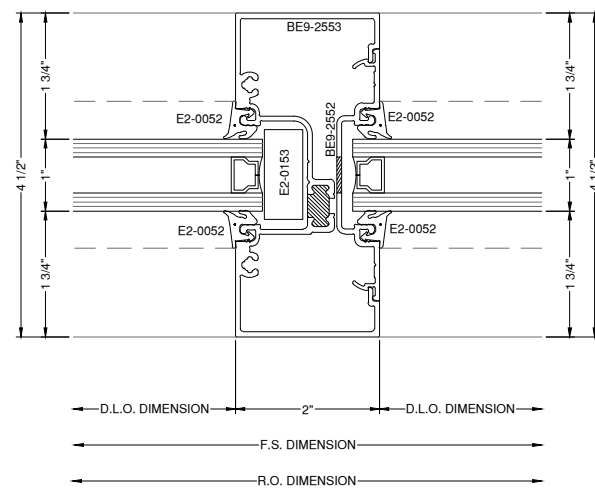
1 HEAD DETAIL 45TU  
DRAWING SCALE  
24x36: 3/4:1  
11x17: 3/8:1



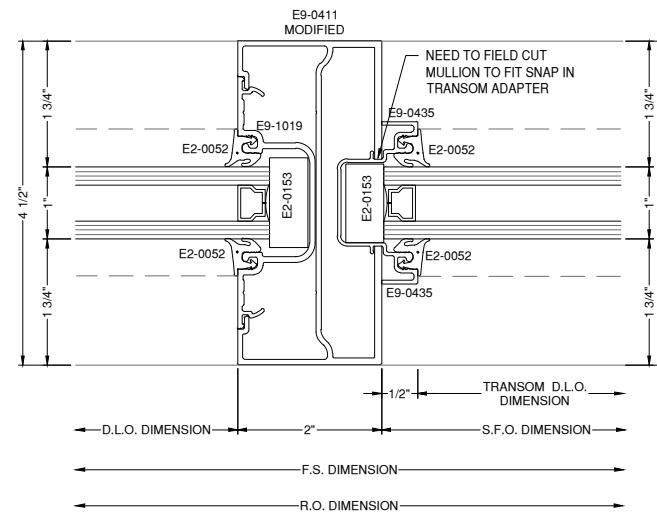
2 SILL DETAIL 45TU  
DRAWING SCALE  
24x36: 3/4:1  
11x17: 3/8:1



3 TRANSOM DETAIL 45TU  
DRAWING SCALE  
24x36: 3/4:1  
11x17: 3/8:1



4 VERT. DETAIL 45TU  
DRAWING SCALE  
24x36: 3/4:1  
11x17: 3/8:1



5 TRANSOM DETAIL 45TU  
DRAWING SCALE  
24x36: 3/4:1  
11x17: 3/8:1

# GLAZING CONTRACTOR

999 STREET, ST  
CITY, STATE 99999  
PH: 999.999.9999



www.MPDRAFTING.com  
P: 248.522.7096  
F: 248.522.7030

## STAMPS/ SUBMITTALS:

REVISION	DATE
0	05.14.2024
-	-
-	-
-	-

PROJECT NUMBER:  
**24-194**

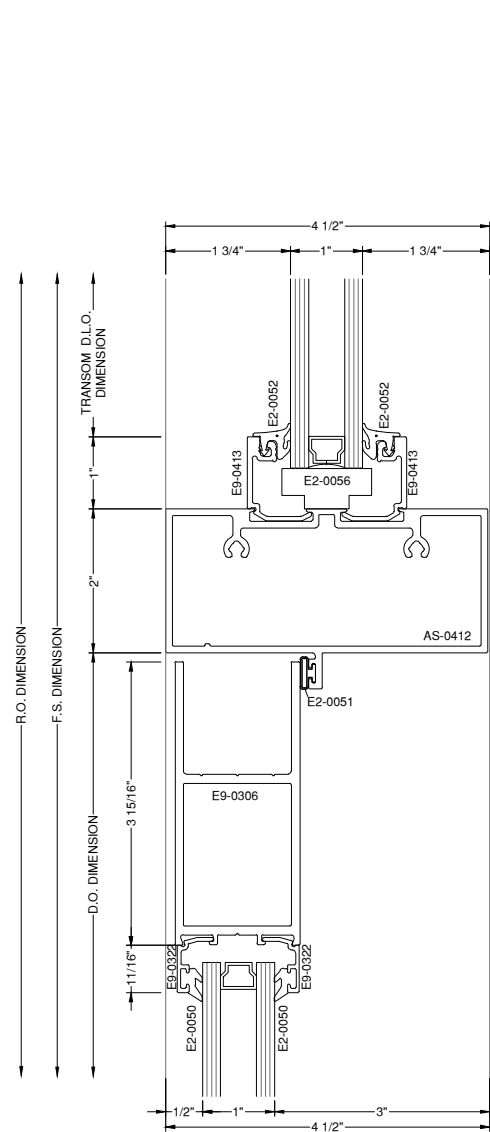
PROJECT NAME:  
**TD BANK**

SHEET DESCRIPTION:  
**DETAILS**

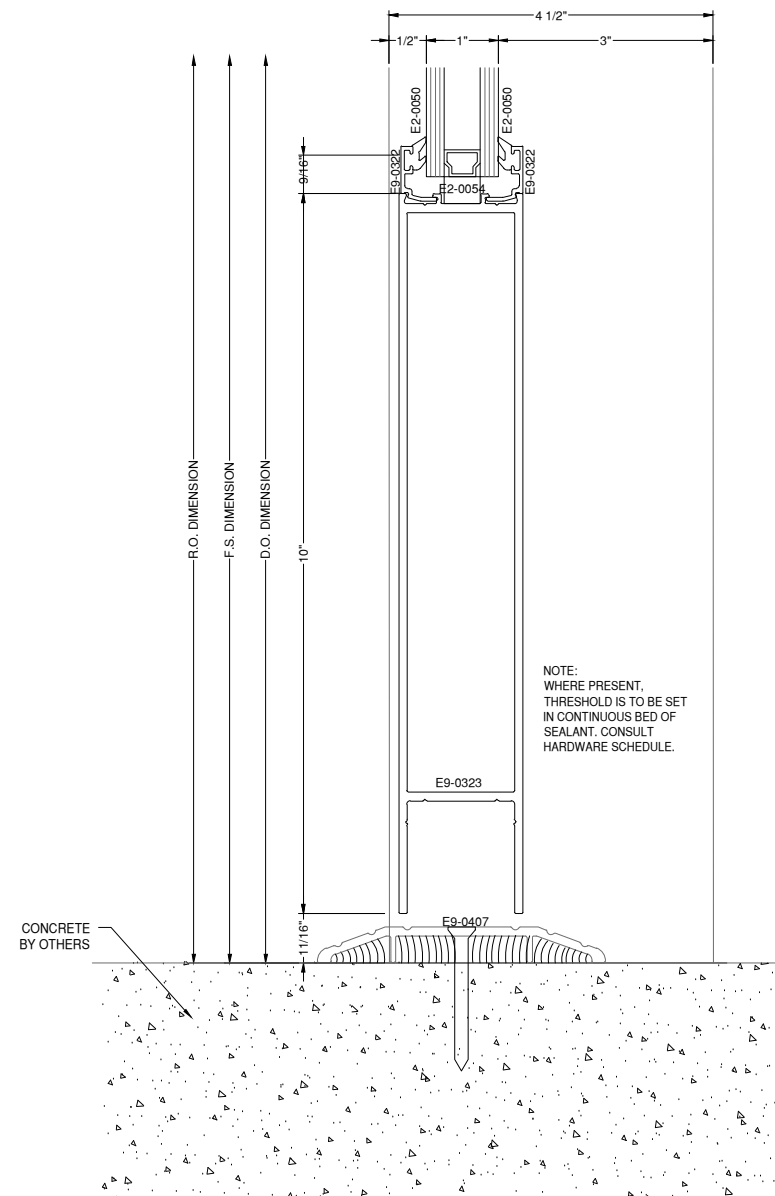
SHEET:  
**D1**

NOTE:  
FASTENERS SHOWN FOR LOCATION  
REFERENCE ONLY. FASTENER TYPE, SIZE  
AND SPACING ARE TO BE DETERMINED  
BY THE PROFESSIONAL ENGINEER.

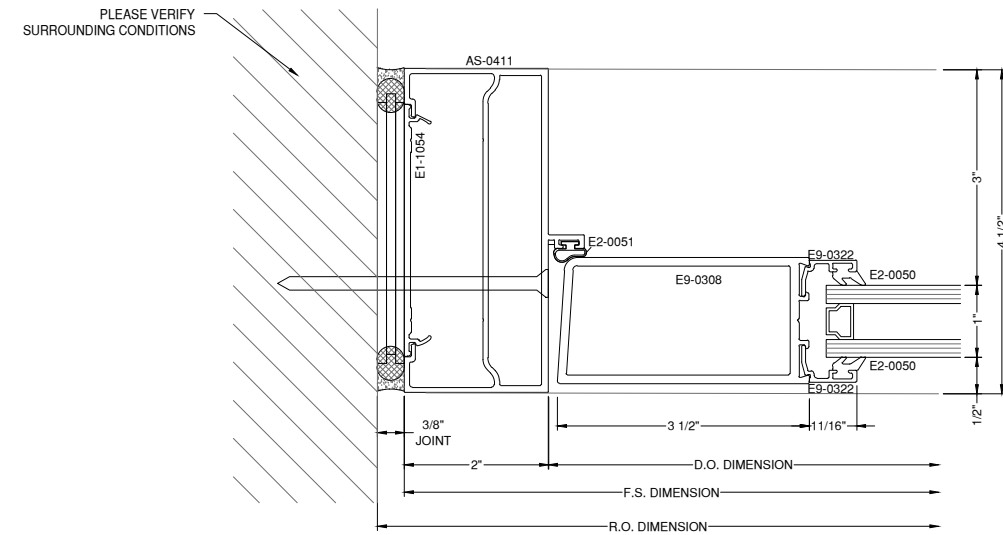
NOTE:  
ALL DIMENSIONS TO BE FIELD  
VERIFIED PRIOR TO FABRICATION



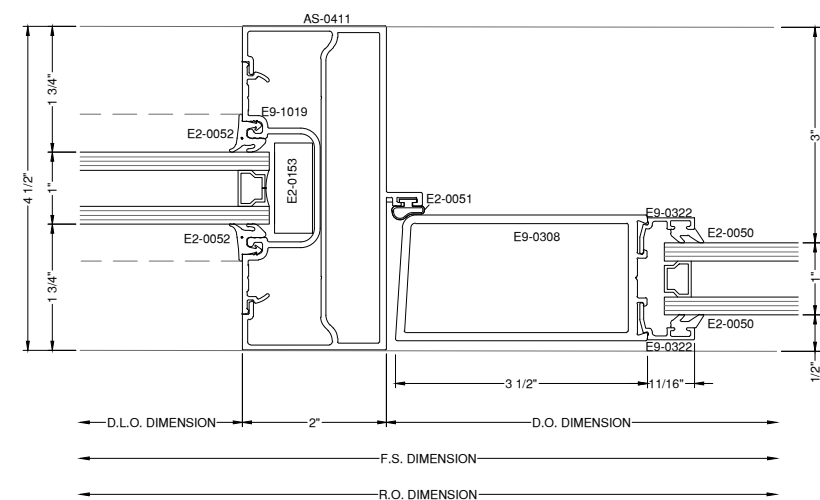
**6** DOOR HEAD DETAIL **45TU**  
DRAWING SCALE  
24x36: 3/4:1  
11x17: 3/8:1  
MEDIUM STILE



**7** THRESHOLD DETAIL **45TU**  
DRAWING SCALE  
24x36: 3/4:1  
11x17: 3/8:1  
MEDIUM STILE



**8** DOOR VERT. DETAIL **45TU**  
DRAWING SCALE  
24x36: 3/4:1  
11x17: 3/8:1  
MEDIUM STILE



**9** DOOR VERT. DETAIL **45TU**  
DRAWING SCALE  
24x36: 3/4:1  
11x17: 3/8:1  
MEDIUM STILE

# GLAZING CONTRACTOR

999 STREET, ST  
CITY, STATE 99999  
PH: 999.999.9999



www.MPDRAFTING.com  
P: 248.522.7096  
F: 248.522.7030

## STAMPS/ SUBMITTALS:

REVISION	DATE
0	05.14.2024
-	-
-	-
-	-

PROJECT NUMBER:  
**24-194**

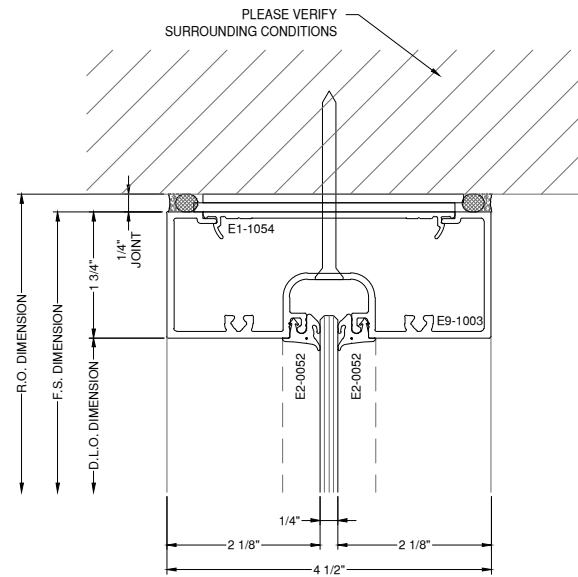
PROJECT NAME:  
**TD BANK**

SHEET DESCRIPTION:  
**DETAILS**

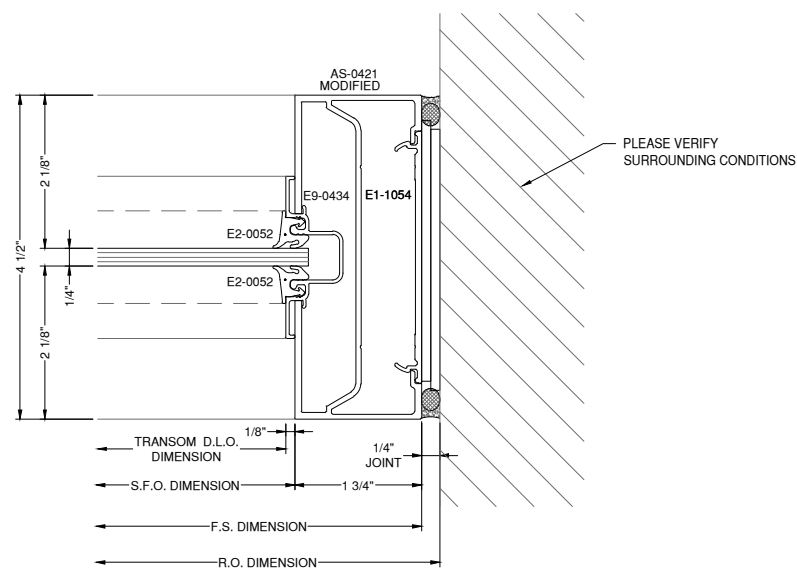
SHEET:  
**D2**

NOTE:  
FASTENERS SHOWN FOR LOCATION  
REFERENCE ONLY. FASTENER TYPE, SIZE  
AND SPACING ARE TO BE DETERMINED  
BY THE PROFESSIONAL ENGINEER.

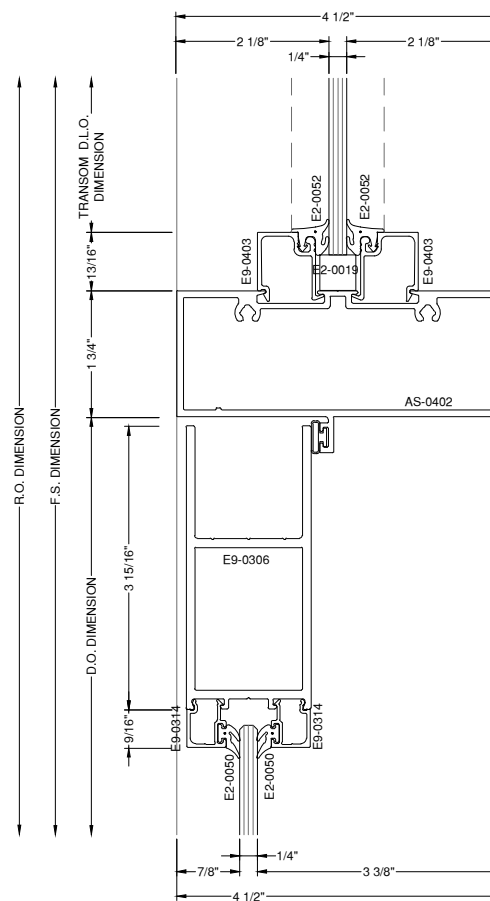
NOTE:  
ALL DIMENSIONS TO BE FIELD  
VERIFIED PRIOR TO FABRICATION



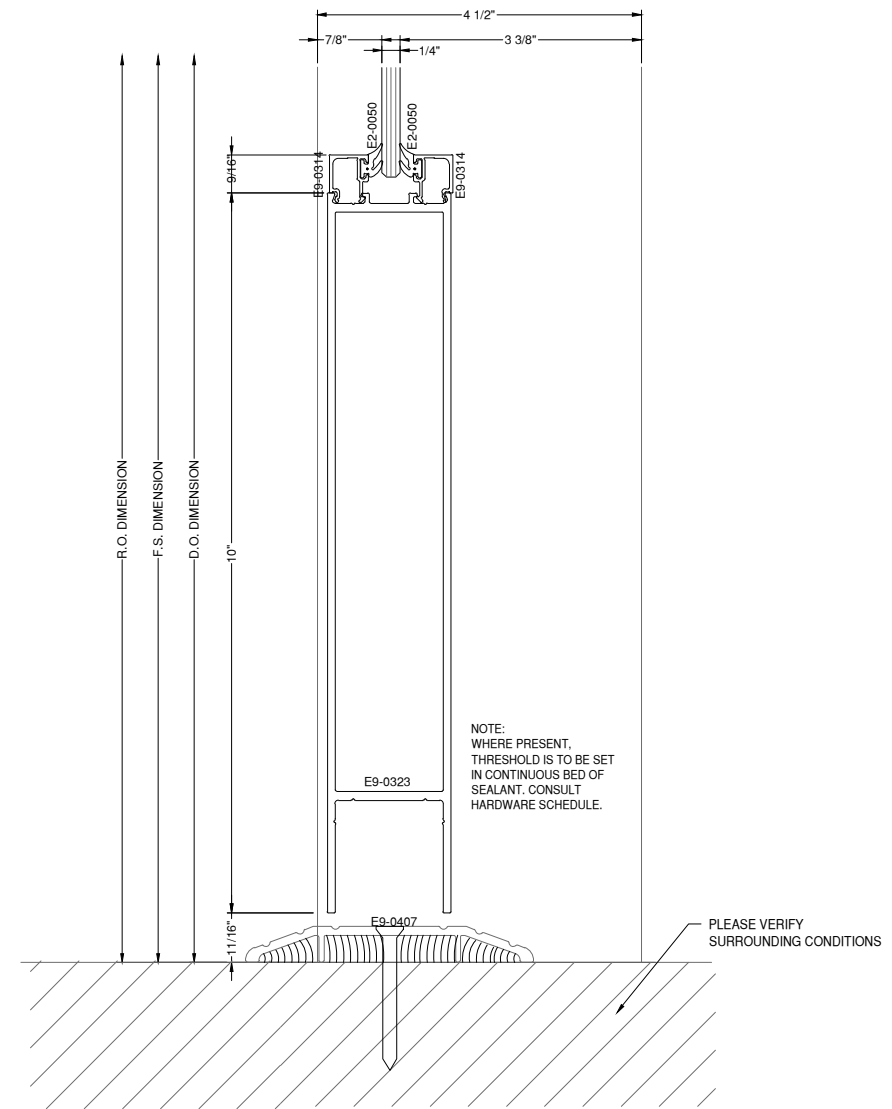
**10 HEAD DETAIL** 45FS  
DRAWING SCALE  
24x36: 3/4:1  
11x17: 3/8:1



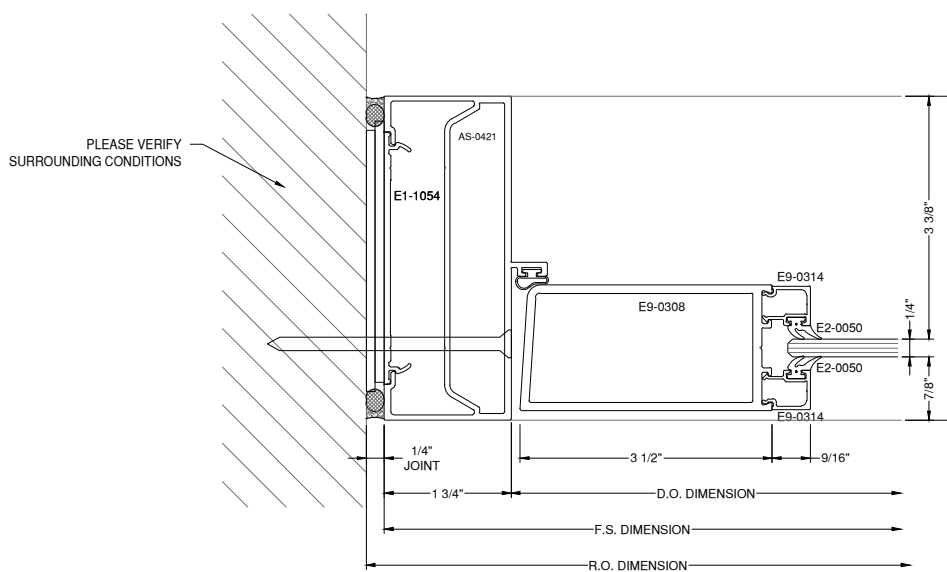
**11 TRANSOM DETAIL** 45FS  
DRAWING SCALE  
24x36: 3/4:1  
11x17: 3/8:1



**12 DOOR HEAD DETAIL** 45FS  
DRAWING SCALE  
24x36: 3/4:1  
11x17: 3/8:1  
MEDIUM STILE



**13 DOOR BOTTOM DETAIL** 45FS  
DRAWING SCALE  
24x36: 3/4:1  
11x17: 3/8:1  
MEDIUM STILE



**14 DOOR JAMB DETAIL** 45FS  
DRAWING SCALE  
24x36: 3/4:1  
11x17: 3/8:1  
MEDIUM STILE

# GLAZING CONTRACTOR

999 STREET, ST  
CITY, STATE 99999  
PH: 999.999.9999



www.MPDRAFTING.com  
P: 248.522.7096  
F: 248.522.7030

STAMPS/  
SUBMITTALS:

REVISION	DATE
0	05.14.2024
-	-
-	-
-	-

PROJECT NUMBER:  
**24-194**

PROJECT NAME:  
**TD BANK**

SHEET DESCRIPTION:  
**DETAILS**

SHEET:  
**D3**